



## Engineered for Safety & Unparalleled Braking Performance!

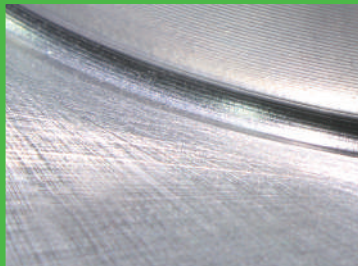
To ensure quality, Nakamoto brake discs are manufactured using **Advance sand casting technology & Fully automated equipment**. Each step of the manufacturing process is subject to strict quality control and original equipment standards.



## Safety, Power, Durability

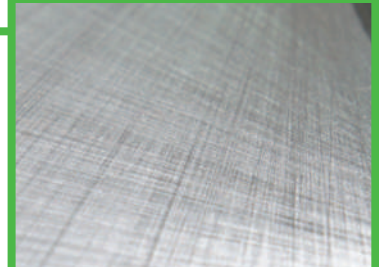
Nakamoto Rotors are manufactured with a state-of-the-art automated casting process using only OE grade G3000 casting alloy for equal strength and structural integrity. With original fitment and form, it's the perfect brake job made easy!

### 100% CNC Machined



Superior balance, reduces vibration & abnormal wear

### Non-Directional Surface Finish



Smoother, quieter, & more effective braking power

### Symmetric Vane Casting



Proper thermal efficiency & weight distribution

### Minimum Rotor Thickness



Additional safety for DIY & professional installers



## POWER SERIES

Nakamoto Performance Power Series brake rotors are zinc coated, crossdrilled and slotted to give your vehicle the extra brake performance that it needs!

- Improved ventilation and cooling.
- Reduced weight.
- Original fit and form. The perfect brake job made easy!

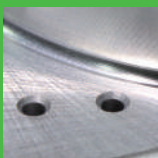
### ***Rounded Slots***

Precision machined to remove brake dust and gas during hard braking.



### ***Chamfered Drill Holes***

CNC cross drilled to help reduce heat spots and cracking at the hole.



### ***"True" Non-Interference Vane Design***

Specific drill pattern for each application. Retains each cooling vane's structure integrity.



### ***Silver Zinc Coated***

Reduces rust and corrosion for a longer lasting and a better looking rotor.



## PERFORMANCE





## Performance Brake Rotor Rotation



**Driver Side**



**Passenger Side**

Power Series Performance Brake Rotors are designed **with slots that “cross the vanes”** (i.e. slots that sweep toward the front of the vehicle).

## Driver side shown



**Straight Vane**



**Directional Vane**

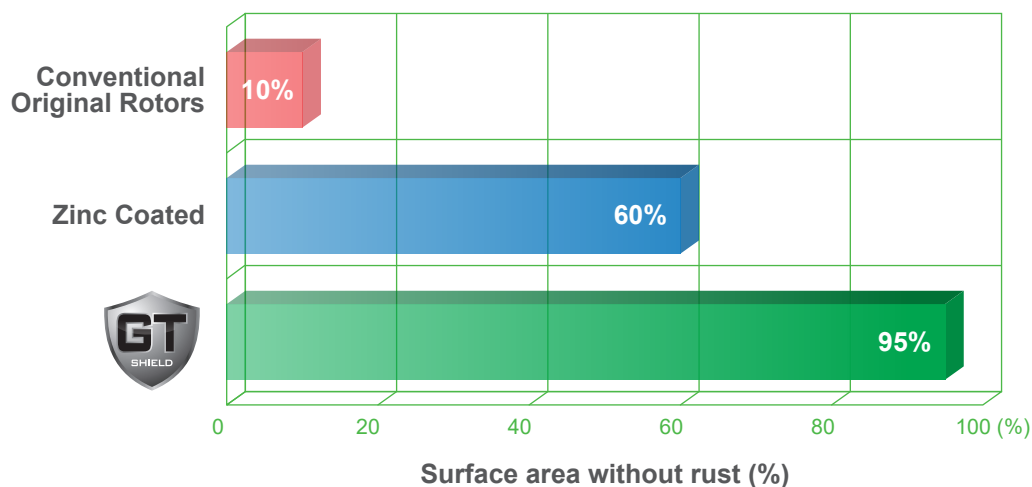
- **Straight Vane Pattern** : It can be installed with the slots in a reverse position without sacrificing performance.
- **Directional Vane Pattern** : By design, this curved vane acts as a pump, **drawing air through the rotor to cool it more efficiently**. It needs to be installed with the vanes sweeping back toward the rear of the vehicle (unless specified otherwise by the vehicle's manufacturer).



## Introducing the latest, most advanced coating Technology!

NAKAMOTO's exclusive "**GT SHIELD**" coating is a special formula containing zinc, aluminum, and metal oxides all designed to fight corrosion damage. "**GT SHIELD**" coating is robotic sprayed over the entire rotor to ensure complete coverage. The rotor is then baked at 550+ °C to form a strong, and durable protective layer.

Whether you prefer our Power Series drilled/slotted rotors or basic line rotors, you can expect our new "**GT SHIELD**" coated rotors to outperform any conventional zinc /paint rotors in the market.



72 hours Salt Spray Test: Surface area without corrosion